



# TOOTHLESS PAPER TOY

## ASSEMBLY INSTRUCTIONS

- 1 Score all the pieces, using a ruler as a guide and running the backside of a butter knife firmly along all dotted lines.
- 2 Using scissors or a craft knife and cutting mat, cut out all pieces along solid lines.



- 3 Fold all pieces along score lines, using the folding key below as a reference.

Mountain Fold



Valley Fold



Hey kids, make sure to ask an adult for help!

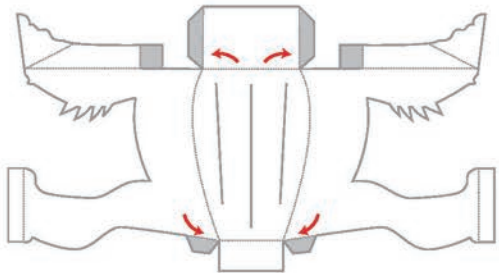


## GETTING STARTED

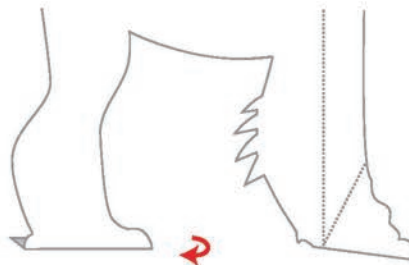
- Materials:
- Metal-edged ruler
  - Butter knife
  - Scissors or craft knife
  - Cutting mat (optional)
  - Multipurpose glue

## ASSEMBLE TOOTHLESS

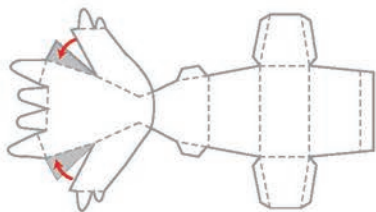
- 4 Body: Fold sides of body inward and glue to A tabs. Glue B tabs under the front body.



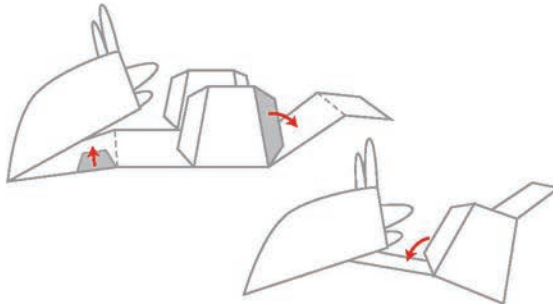
- 5 Body: Fold C tabs under.



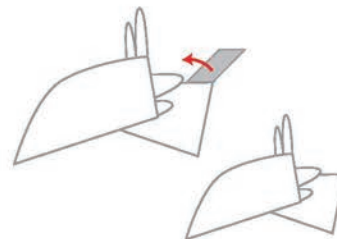
- 6 Head: Fold sides of head inward and glue to A tabs.



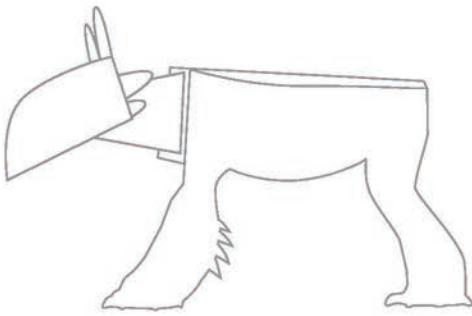
- 7 Head: Glue B tabs under sides of head. Then glue C tabs to back panel, and D tabs to bottom of the head.



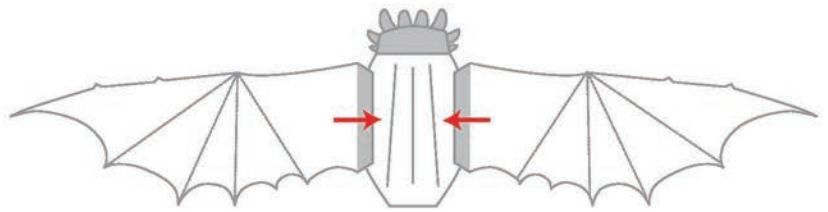
- 8 Head: Fold E tab back, and secure under top of head.



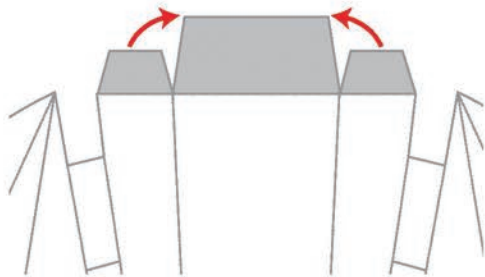
9 Head: Glue head to front of body.



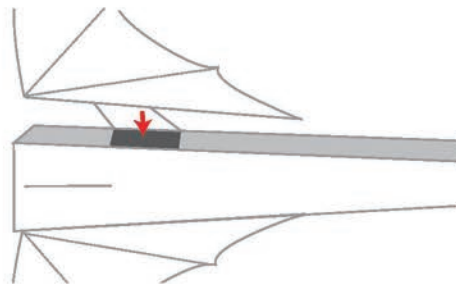
10 Wings: Insert tabs and glue toward the center on the underside of body.



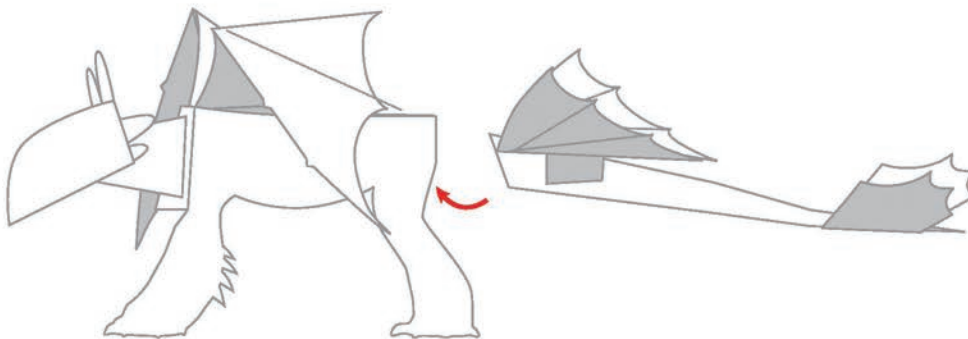
11 Tail: Fold A tabs inward and glue under tab B.



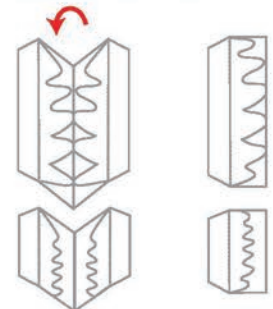
12 Tail: Fold C tabs upward and glue to the tail.



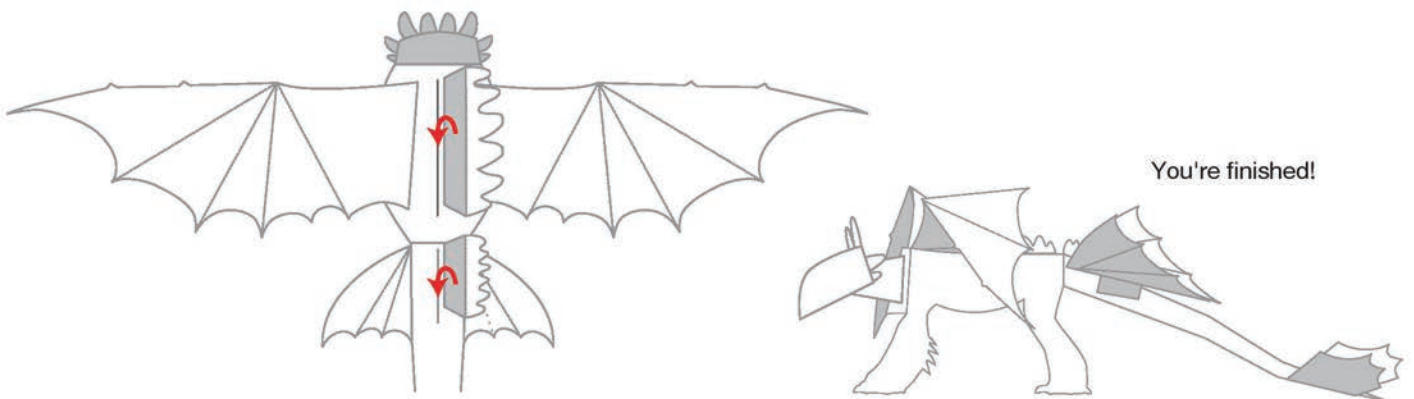
14 Tail: Glue end of tail to the back of body.



15 Fin: Cut around fin pieces, fold in middle, then cut around spike line.



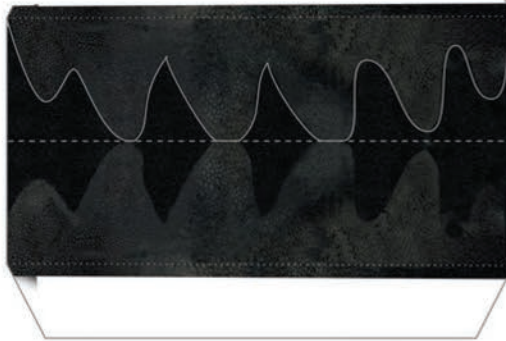
16 Fin: Slip fin tabs through slits on back and tail, and glue underneath to secure.





LEFT WING

LARGE FIN



SMALL FIN



RIGHT WING



HEAD

