

# 3-D METROMAN PAPER TOY

DREAMWORKS  
**MEGAMIND**  
BAD. BLUE. BRILLIANT.



**ASSEMBLE**

1.  CUT	2.  SCORE	3.  GLUE
---------	-----------	----------

**IMPORTANT!**  
MAKE SURE TO ASK AN ADULT FOR HELP!  
Cut out all your pieces first on solid lines using scissors or a craft knife. Don't forget to cut slit on the body.

**FOLDING KEY**

Fold all pieces upward or downward along score lines.

MOUNTAIN FOLD VALLEY FOLD

**GLUE TIP**  
Cut a piece of scrap paper to make a gluing tool. Use the tool as a brush to apply glue on smaller pieces.

**PRINTING**

Use heavy card stock for your MetroMan Paper Toy.

Be sure to follow your printer instructions for 2-sided printing.

Print page 3-6 first. Then print page 7 on the back side of page 6.

## BODY

**1.**

Glue tabs A-B, on the left side. Hold until dry. Repeat on the right side. Glue tabs C-F in order. Hold until dry.

**2.**

Glue tab G on the left side. Hold until dry. Repeat on the right side. Glue tabs H-J, on the left side. Repeat on the right. Hold in place until dry. Glue K tabs.

**3.**

**IMPORTANT:**  
Do not glue any of the pelvis tabs at this time. Set body aside.

## LEGS

**4.**

Glue tab A. Fold down tab B and tuck in tab C to close bottom of leg. Glue tabs D-F on the left side. Repeat on the right.

**5.**

Glue tabs G-K. Hold until dry. Glue tabs L-N. Hold until dry. Glue tabs O-R. Hold until dry. Glue tab S. Keep remaining tabs open to attach to body.

**6.**

Glue U tabs from each leg together. Hold until dry. Glue T tabs and insert into body. Hold until dry.

**7.**

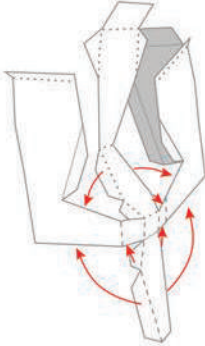
Glue body tabs L to leg tabs V. Fold side over, glue and tuck in body tabs M. Fold long middle pelvis flap in between legs and glue to body tab M.

# 3-D METROMAN PAPER TOY

## BOOTS

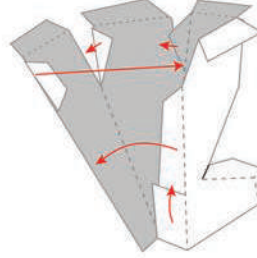
8.

Glue tabs A-B, on the left side. Hold until dry. Repeat on the right side. Glue tabs C-E.



9.

Glue F tabs. Glue tab G. Fold up tab H and glue to tab I. Glue tabs H-J. Fringe top tabs with scissors and fold down over boot. Put glue on inside of boot. Slide boot over leg.



## CAPE

10.

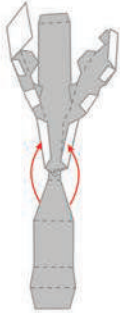
Align tab A to fold line on back and glue. Hold until dry. Align B tabs to top of shoulders and glue. Hold until dry.



## ARMS

11.

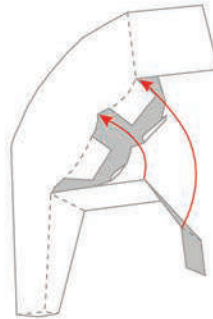
Glue A tabs together. Fold arm over and glue B tabs. Hold until dry.



12.

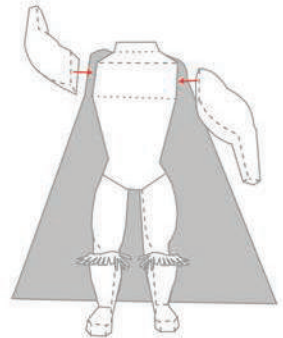
Glue tabs C-E. Hold until dry. Glue tabs F-G. Hold until dry. Fold over tab I and glue to H tabs.

**TIP:**  
On curved areas, press valley folds into corners.



13.

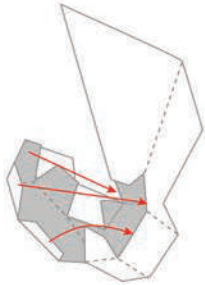
Glue right arm pointing upward to right side of body. Glue left arm pointing downward to left side of body.



## GLOVES

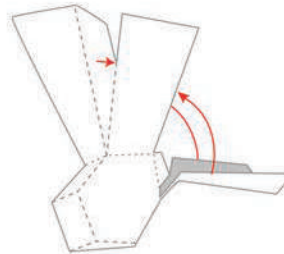
14.

Glue tabs A-E. Hold until dry. Glue tabs H-I. Hold until dry.



15.

Fold in tab J. Glue tab K on the left side. Repeat on the right.



16.

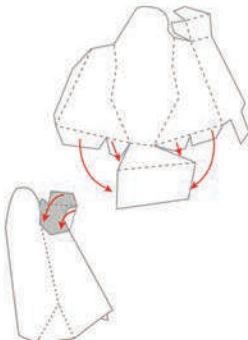
Align tab L to top of glove, leaving a triangular portion overhanging and glue. Fringe triangle with scissors. Put glue on the inside of the glove. Slide glove over arm.



## HEAD

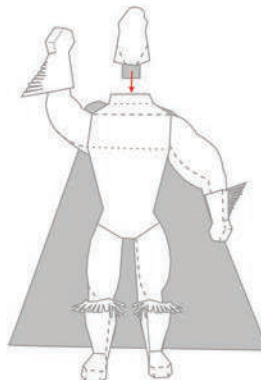
17.

Glue A tabs. Hold until dry. Glue B tabs. Hold until dry. Glue C tabs. Fold D tabs and tuck in to close top of head.

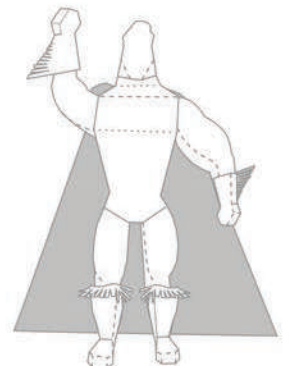


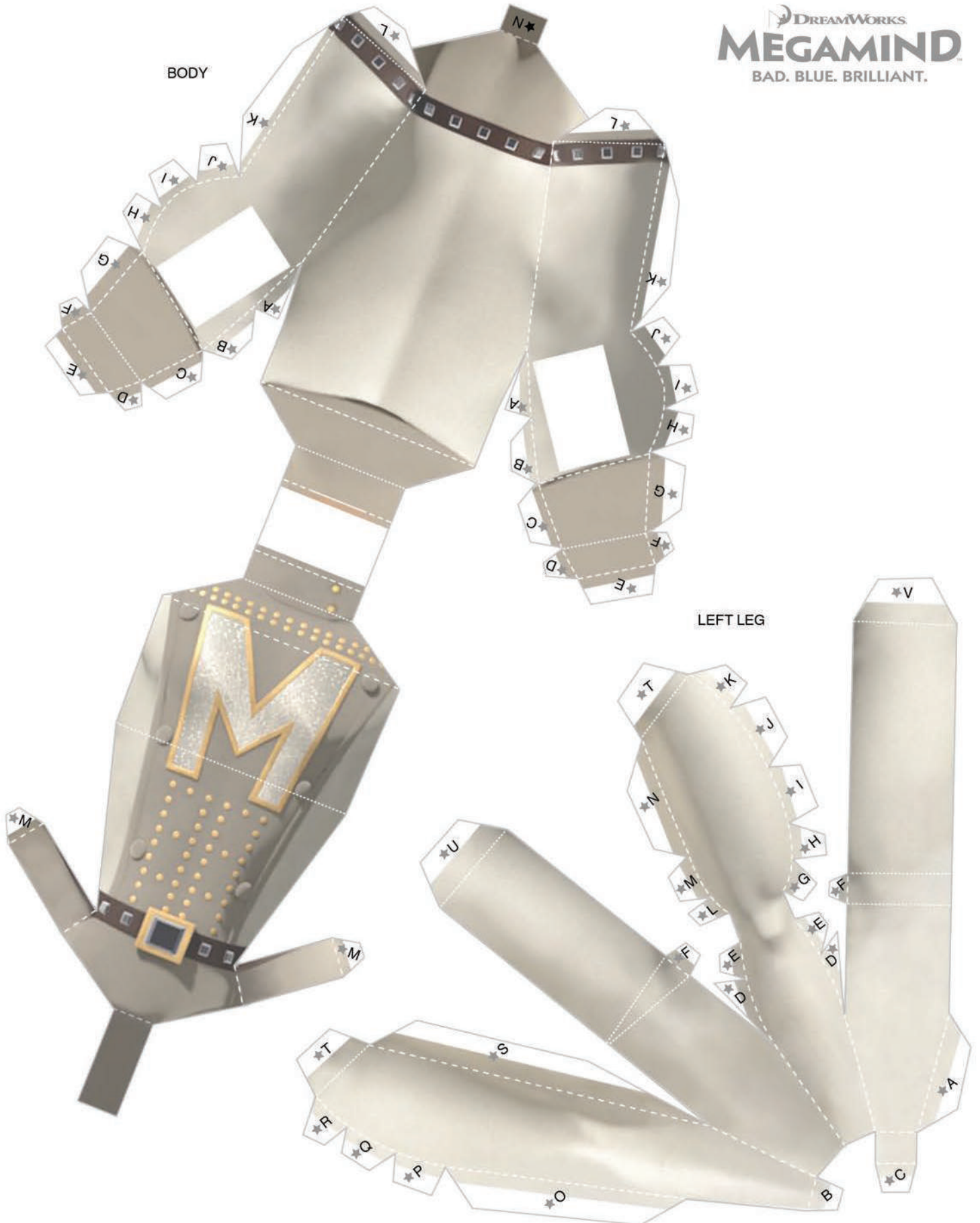
18.

Insert tab E into slot in the top of the body at the back of the neck. Tilt head back, apply glue and press down gently.

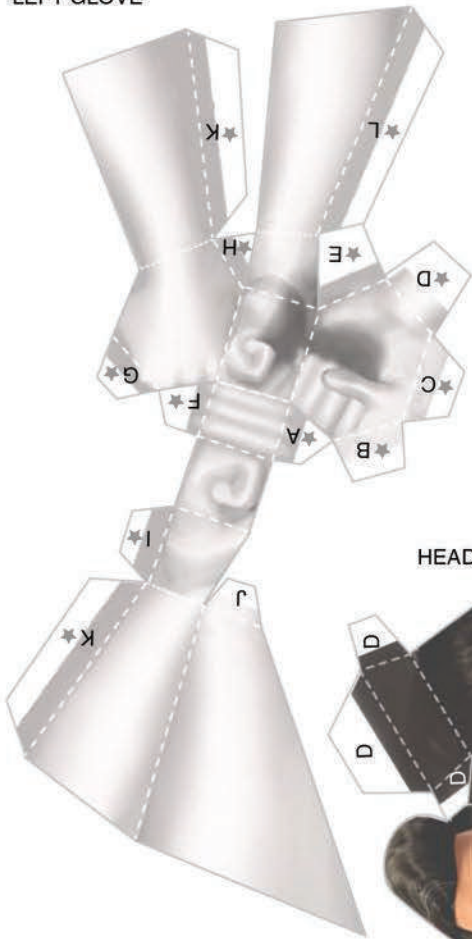


You're done!



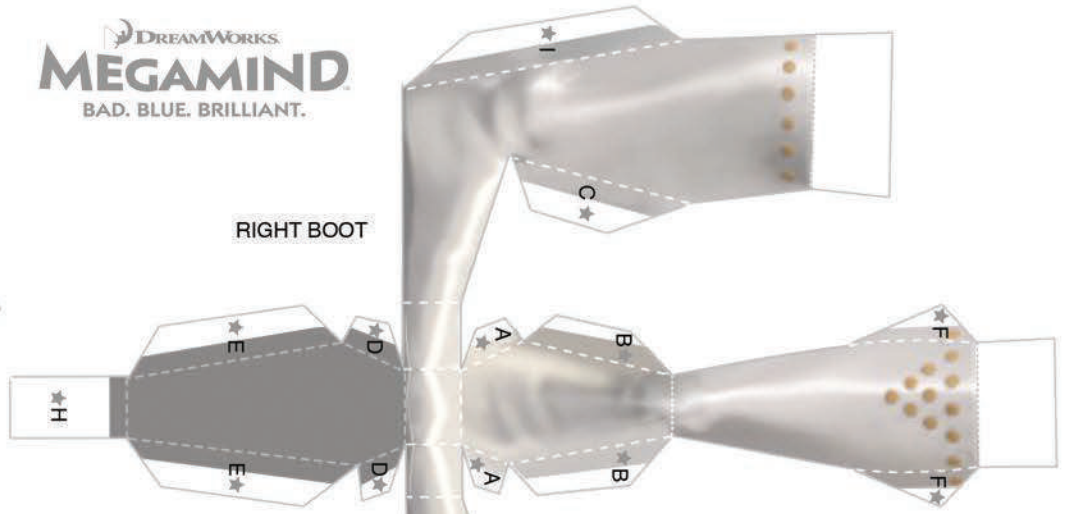


LEFT GLOVE

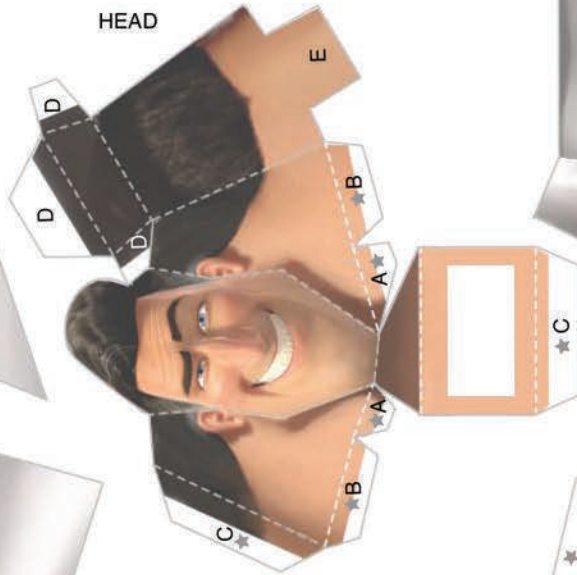


DREAMWORKS  
**MEGAMIND**  
 BAD. BLUE. BRILLIANT.

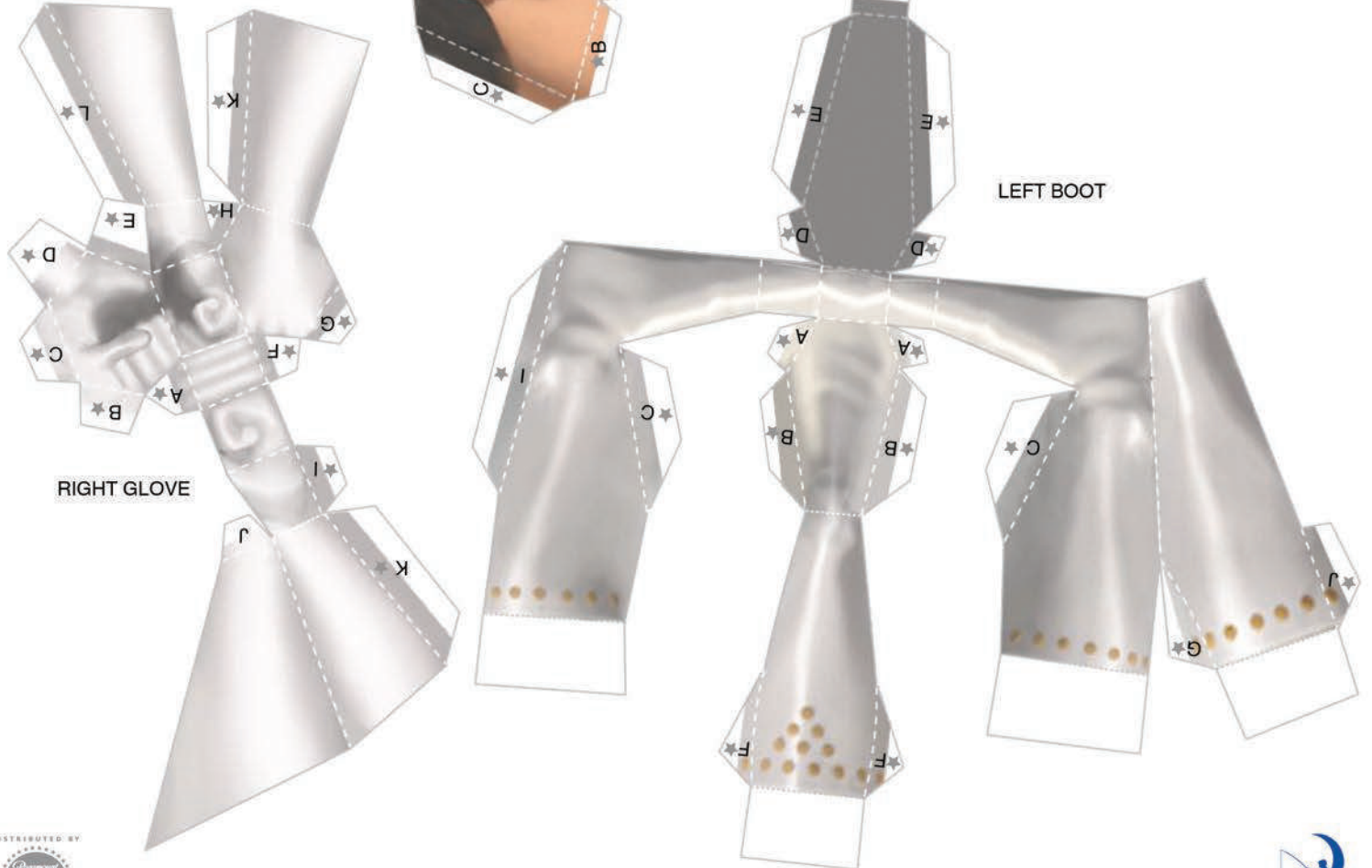
RIGHT BOOT



HEAD

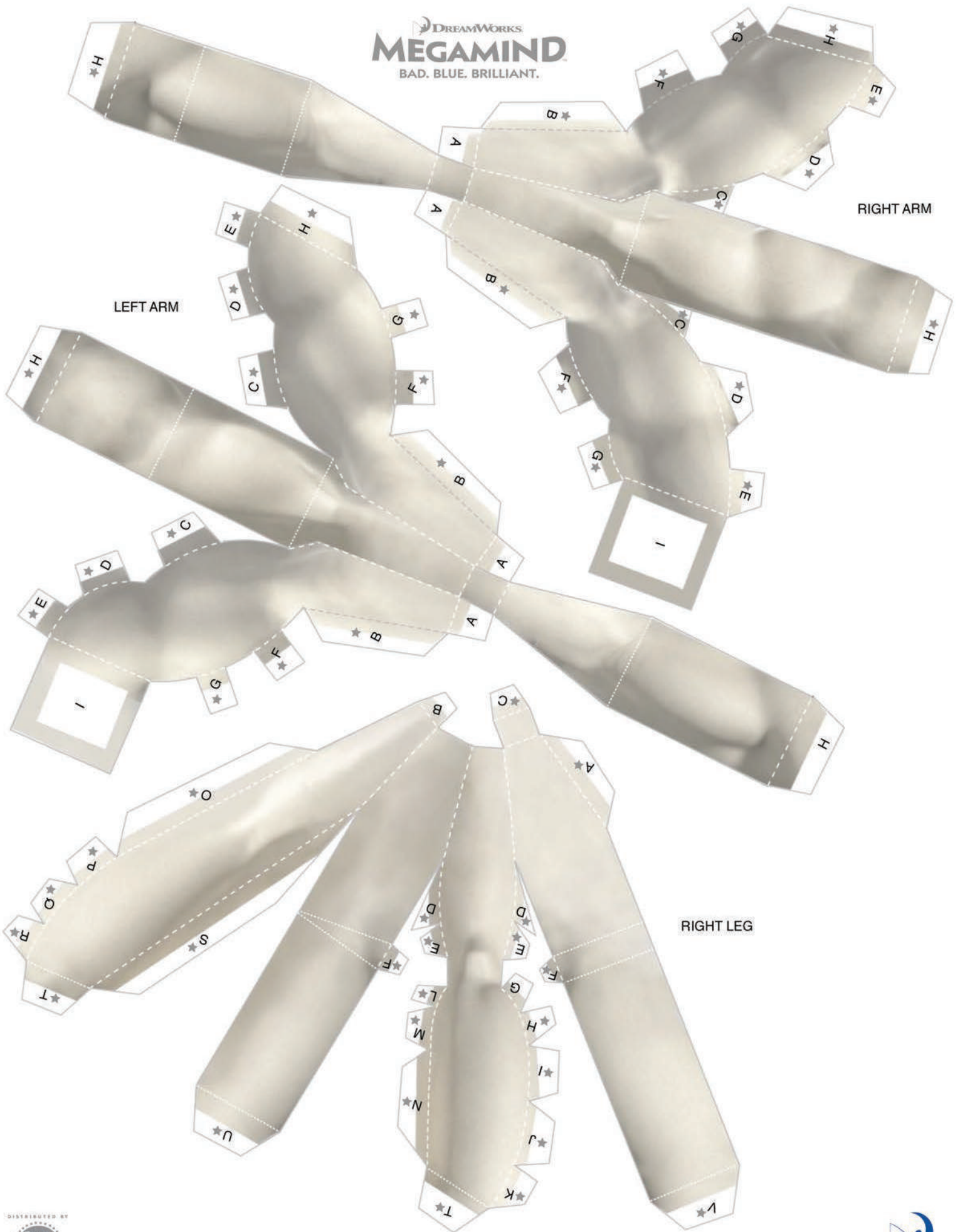


LEFT BOOT



RIGHT GLOVE





LEFT ARM

RIGHT ARM

RIGHT LEG

CAPE: OUTSIDE



DREAMWORKS  
**MEGAMIND**  
BAD. BLUE. BRILLIANT.

CAPE: INSIDE

