

# 3-D MINION PAPER TOY

DREAMWORKS  
**MEGAMIND**  
BAD. BLUE. BRILLIANT.



## ASSEMBLE



## IMPORTANT!

**MAKE SURE TO ASK AN ADULT FOR HELP!**  
Cut out all your pieces first on solid lines using scissors or a craft knife. Don't forget the slits on the backpack!

## FOLDING KEY

Fold all pieces upward or downward along score lines.

MOUNTAIN FOLD



VALLEY FOLD



## GLUE TIP

Cut a piece of scrap paper to make a gluing tool. Use the tool as a brush to apply glue on smaller pieces.

## PRINTING



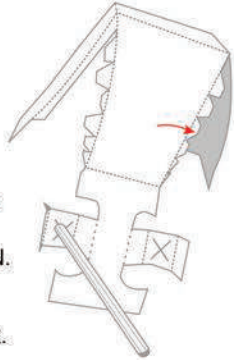
Use heavy card stock for crafting your Minion Paper Toy.

## BODY

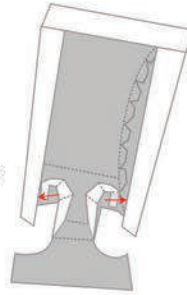
1. Poke holes in the X slits. Insert a pencil in each slit to make the holes wider.

Glue tabs A-G to left side panel to form chest shape. Hold until dry. Repeat on right side with tabs H-N.

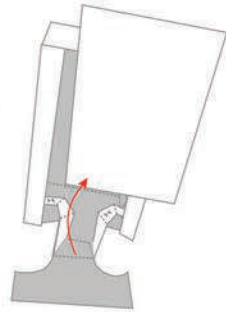
Glue O tabs one at a time to side panels to form trunk.



2. Turn over, glue P tabs, one at a time, to the inside of the trunk, aligning them with the bottom edge.



3. Attach back panel to Q tabs, aligning it to the top first then the sides of the body. Fold up pelvis and glue.



## LEGS

4. Using a pencil role leg piece to form a cylinder add glue and hold until dry.

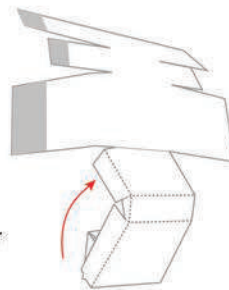
TIP: Add glue just before edge.



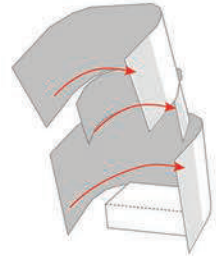
## BOOTS

5. Start by tucking B tabs under tab A. Glue tab C over tab A, making sure to align with dashed line. Repeat on the opposite side.

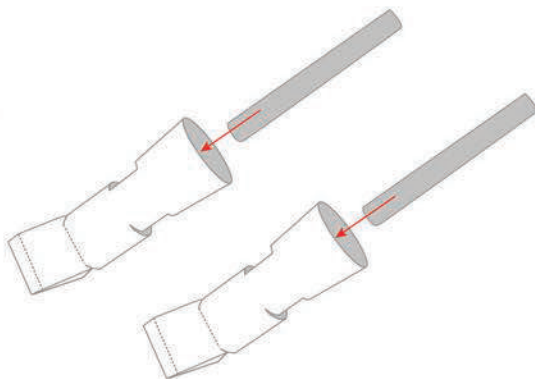
Tuck and glue D tabs under C tabs. Tuck tab E under.



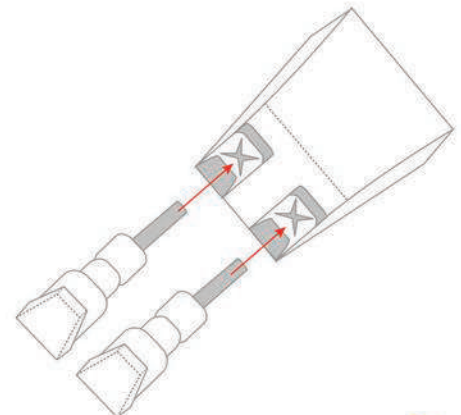
6. Glue right side panel F to tab G. Hold until dry. Repeat with panels H and J, then I and K.



7. Insert legs into boots and glue to the back side of each boot.



8. Insert legs into bottom of body. Glue into place.





BACK BODY PANEL



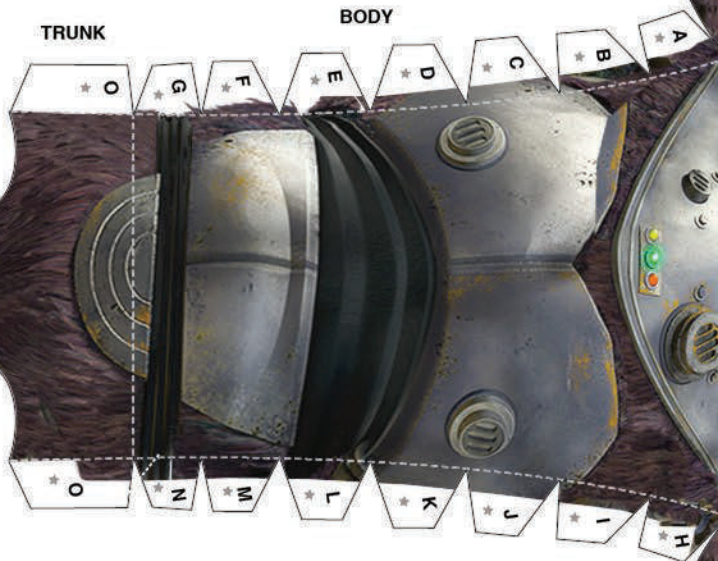
SIDE PANEL



Q \*

TRUNK

BODY



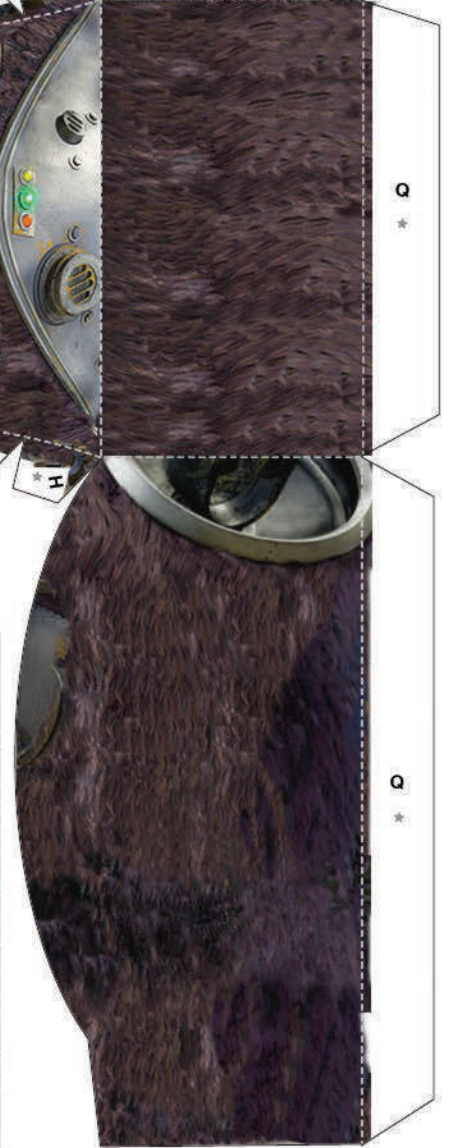
Q \*



P

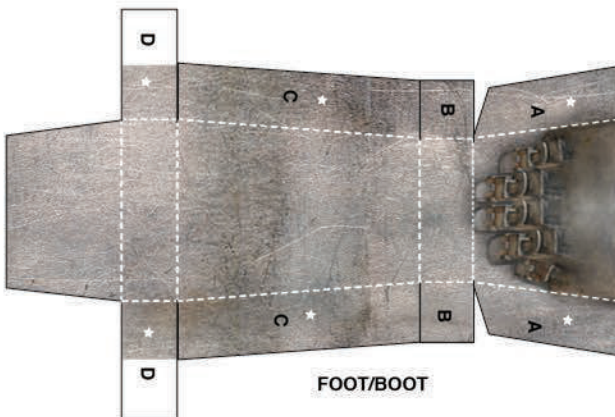
P

SIDE PANEL

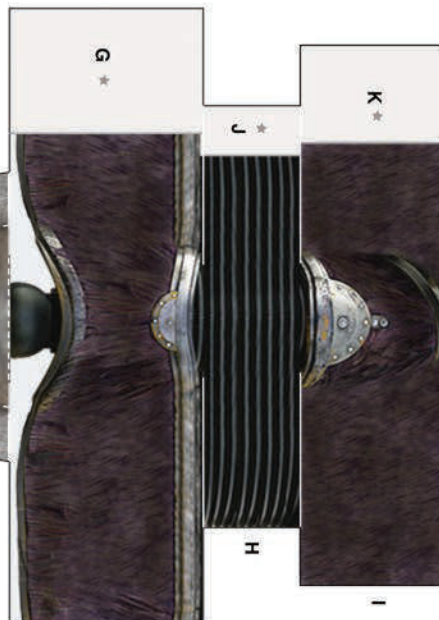


Q \*

FOOT/BOOT



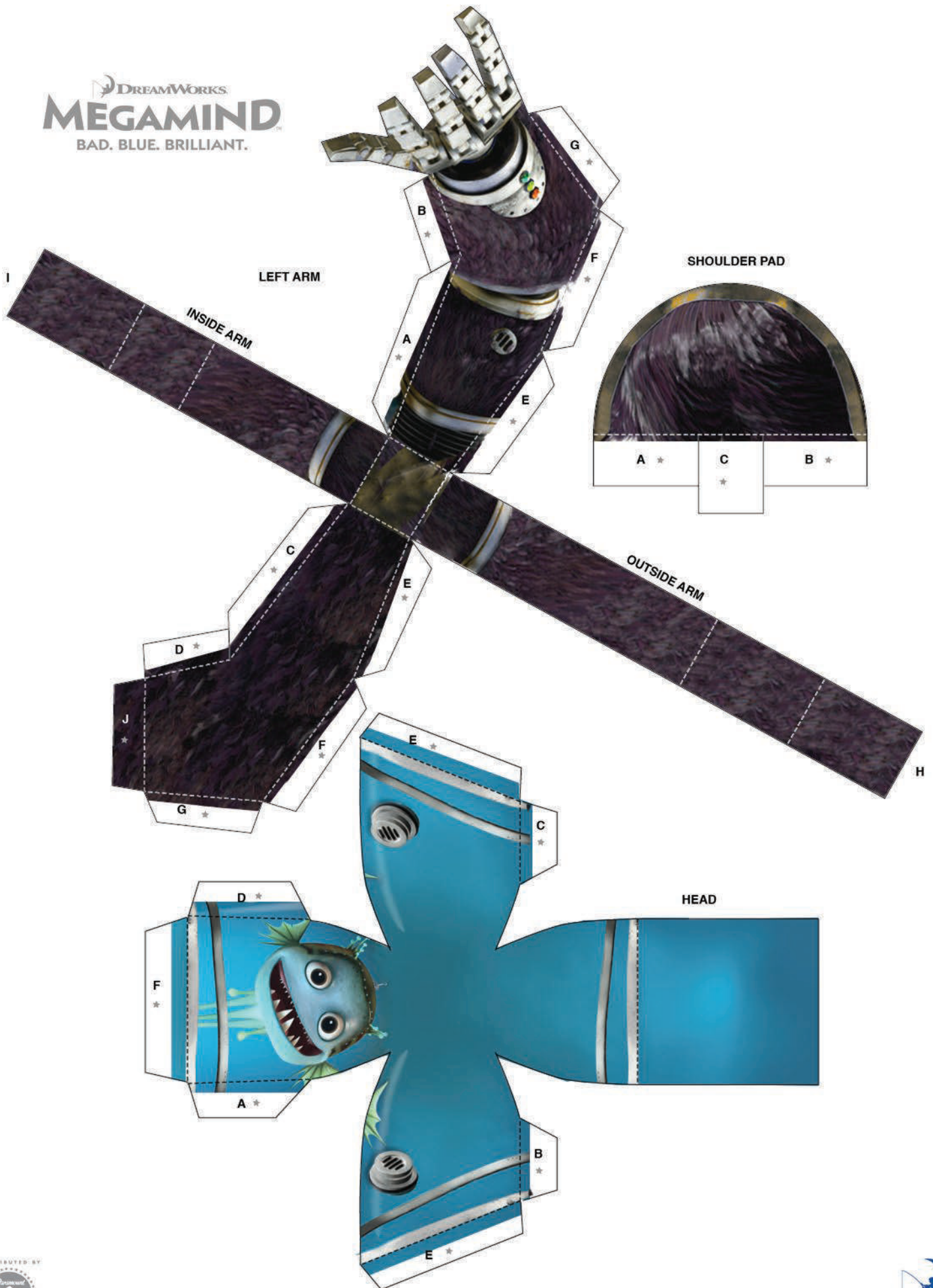
E



F



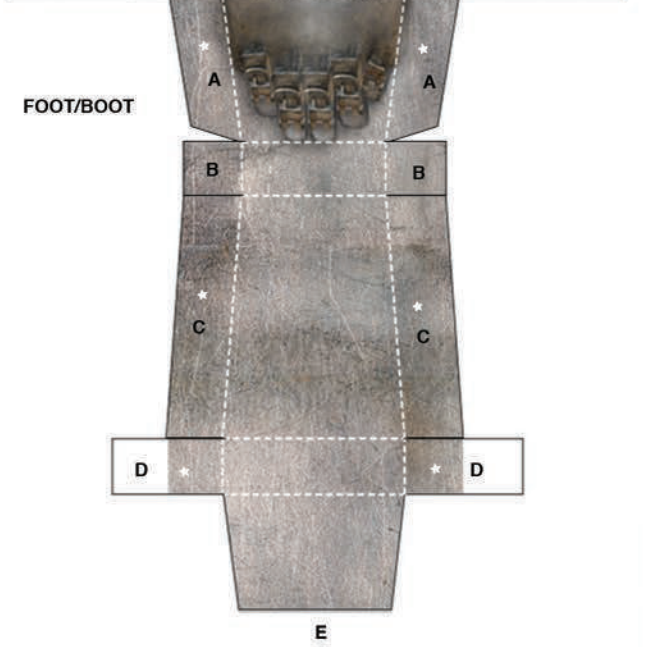
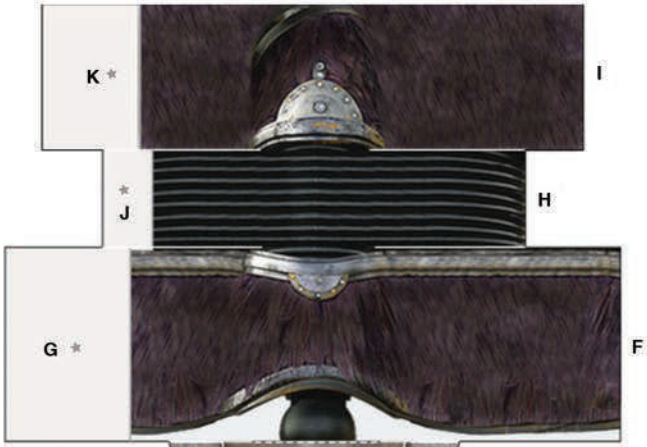
DREAMWORKS  
**MEGAMIND**  
 BAD. BLUE. BRILLIANT.





LEG

LEG



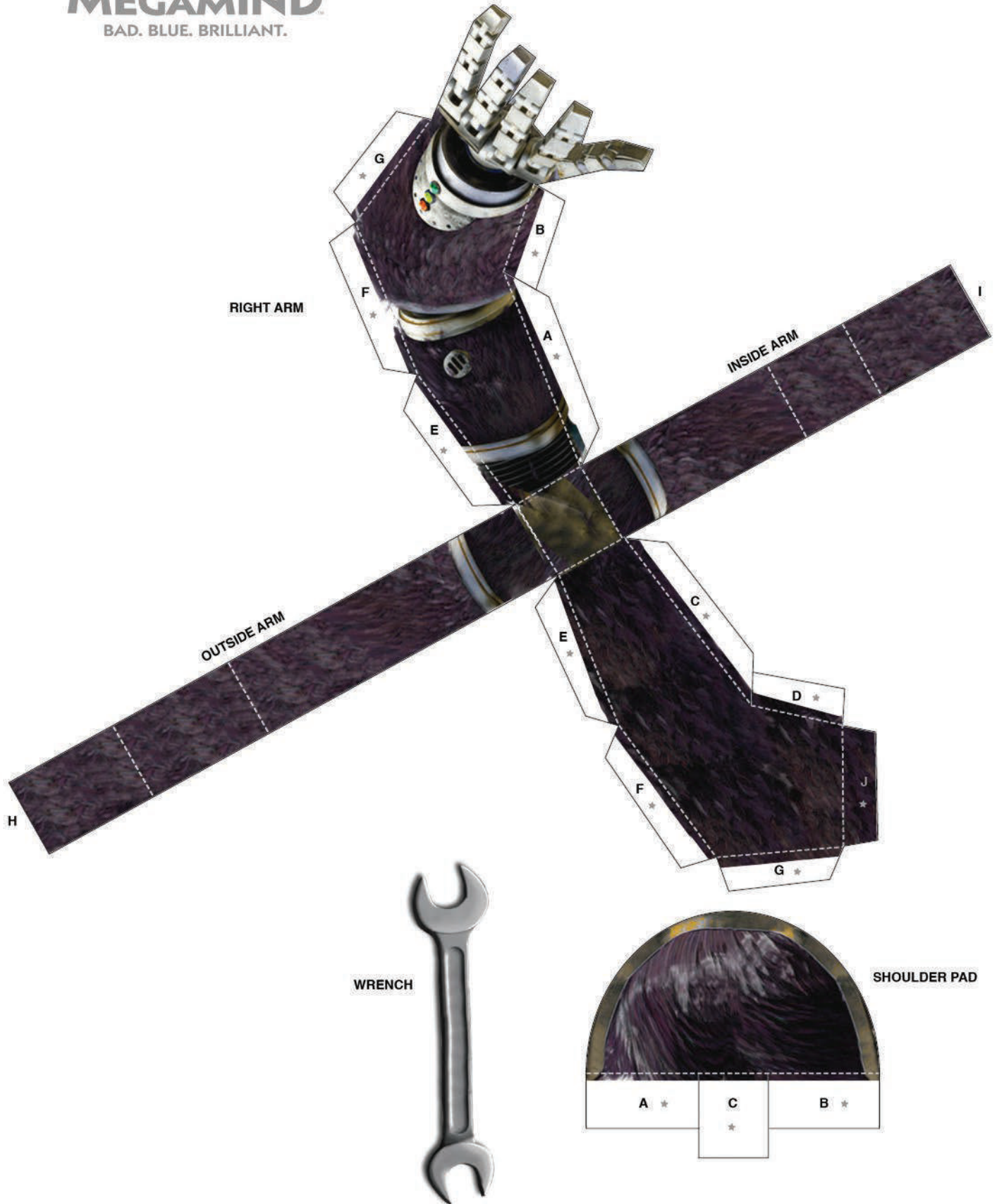
FOOT/BOOT

DREAMWORKS  
**MEGAMIND**  
 BAD. BLUE. BRILLIANT.

BACK PACK

ANTENNAS



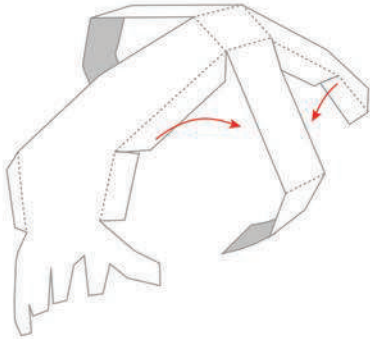




## ARMS

9.

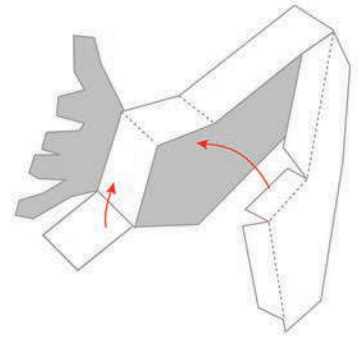
Glue in order tabs A-D to inside arm panel.



10.

Glue in order tabs E-G to inside arm panel.

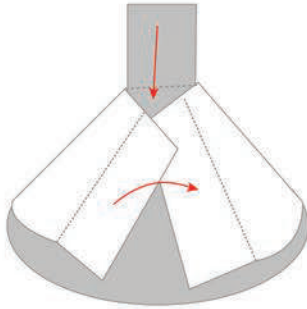
Glue tab H to tab J and close by gluing tab I over tab H.



## SHOULDER PADS

11.

Glue tab A over B. Glue tab C over the top of both A and B.



12.

To attach shoulder pad, glue arm into pocket. Hold until dry.

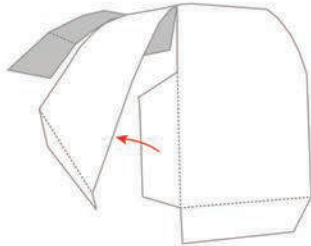
Glue arm and shoulder pad onto body. Fold hand forward.



## HEAD

13.

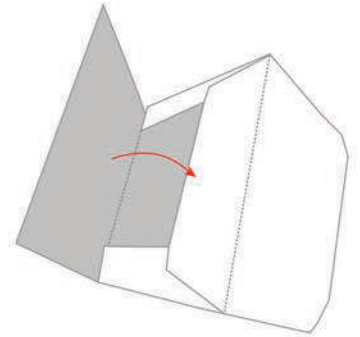
Fold all tabs down. Glue in order tabs A-D to side panels.



14.

Glue tab F down over E tabs to close head.

Glue head to the center of the top of the body.



## ANTENNAS

15.

Fold in half and glue together. Let dry. Cut around antenna to form shape.

Insert antennas into slits on top of pack.

Add a drop of glue to tab A and bend back to secure.



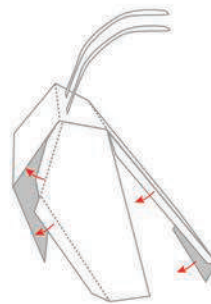
## BACKPACK

16.

Glue tabs A-B on left side. Repeat on right side. Turn over and glue tabs C to back panel.

Glue tab D and tuck into back panel to close.

Glue pack onto back of body.



Cut out the wrench and glue to inside of hand.

You're done!

